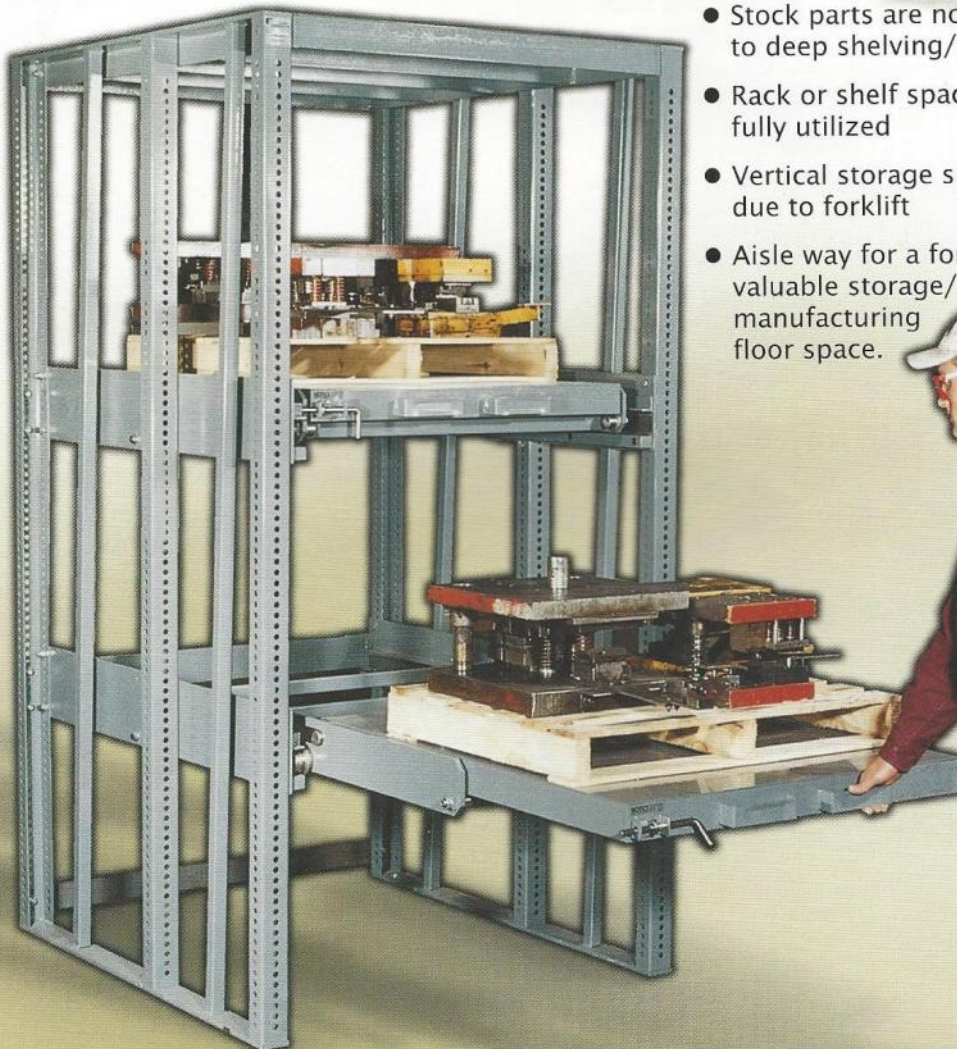
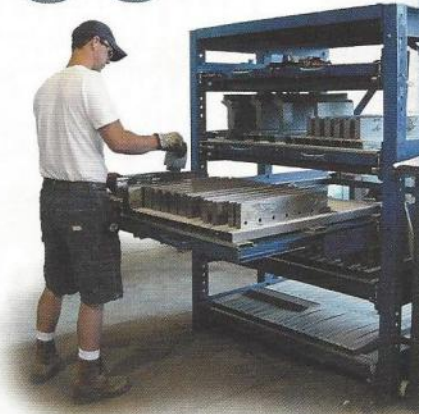


PRODUCTION STORAGE SYSTEMS

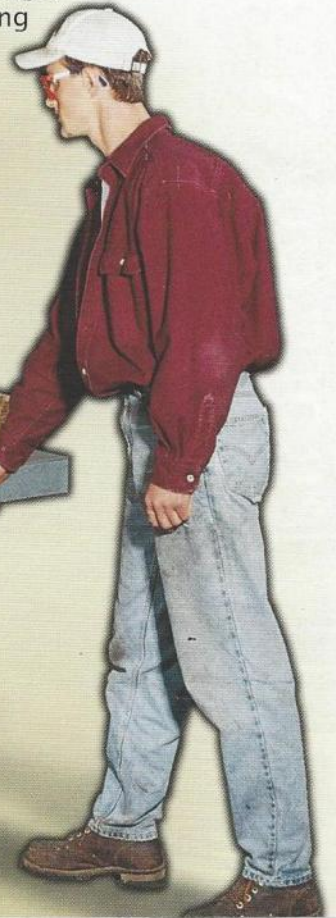
GLIDE-OUT 100

WHEN DO YOU NEED A GLIDE-OUT?

- Floor space is too restricted to access racking with forklift
- Workers are leaning too far into existing shelving to hand pick heavy items
- Machine down time is excessive between die/tool changes
- Tooling, dies or material is too valuable to handle with forklift



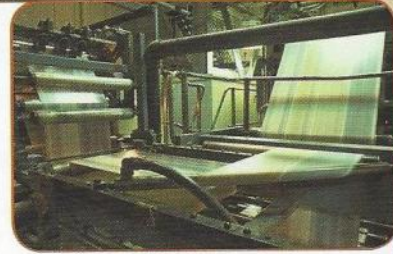
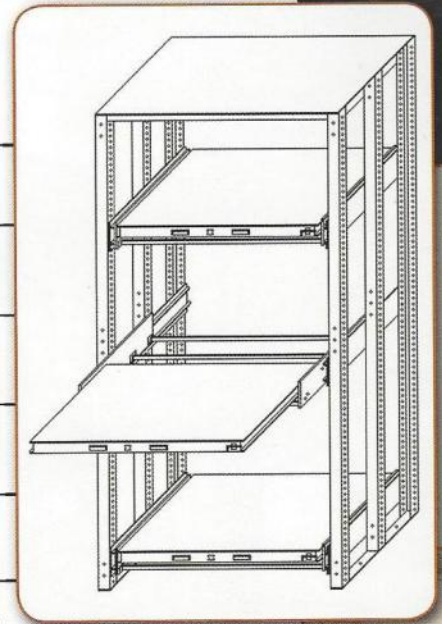
- Stock parts are not visible due to deep shelving/racking
- Rack or shelf space is not being fully utilized
- Vertical storage space is wasted due to forklift
- Aisle way for a forklift takes up valuable storage/manufacturing floor space.



PRODUCTION STORAGE SYSTEMS

GLIDE-OUT 100

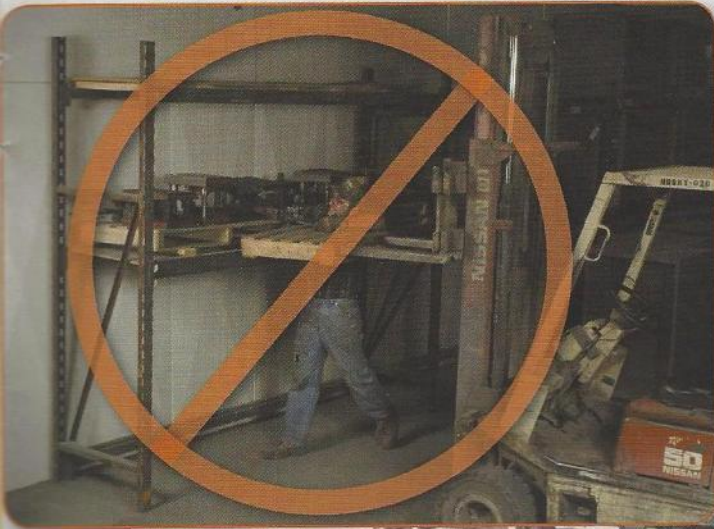
INDUSTRY	APPLICATION
AUTOMOTIVE	Stamping dies, test motors, assembly components, tool crib components
AIRCRAFT	Turbine components, engine components, dies
ENERGY	Valves, pumps, hydraulic pumps, production tooling, compressor parts, precision drill heads, breaker boxes
PLUMBING & HEATING	Generators, valves, pumps, fans
PHARMACEUTICAL	Pumps, valves
CHEMICAL	Paints, coatings, fluids, cylinder gas, adhesives
PLASTICS	Injection molds, castings
TOOL & DIE	Machine parts, heavy tooling
STEEL FABRICATION	Specialty metals, pressbrake tooling, coil storage
PRINTING	Printing plates, printing cylinders



PRODUCTION STORAGE SYSTEMS

GLIDE-OUT 100

CAN YOU AFFORD **NOT** TO HAVE A GLIDE-OUT?



SAVE. ● ● **MACHINE DOWN TIME** by placing a glide-out next to production machinery

... **MAN HOURS** by eliminating a forklift driver in die, mold or tooling change over

... **AISLE WAY SPACE** by eliminating needed forklift turning radius used in stationary racking

... **MANUFACTURING FLOOR SPACE** by utilizing vertical space with a multi-level glide-out

... **EMPLOYEES FROM INJURY** by reducing the need for bending or extracting heavy items from stationary shelves

SEE FULL GLIDE-OUT JUSTIFICATION AT
www.rack-eng.com/glidejustif



PRODUCTION STORAGE SOLUTIONS

PRODUCTION STORAGE SYSTEMS GLIDE-OUT 100

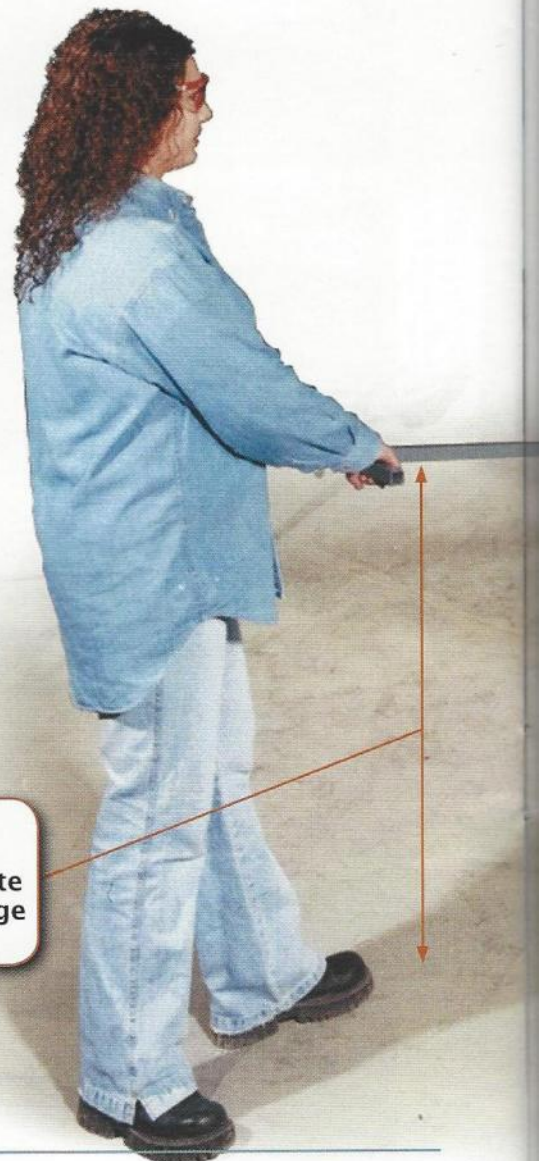
Safety and ergonomics are extremely important. We designed the Glide-Out 100 utilizing ergonomic research provided by "People At Work - Volume 1", to meet or exceed safety and ergonomic standards.

Rack Engineering Division's Glide-Out 100 can solve even the most unique production storage problems with ergonomics and safety in mind.

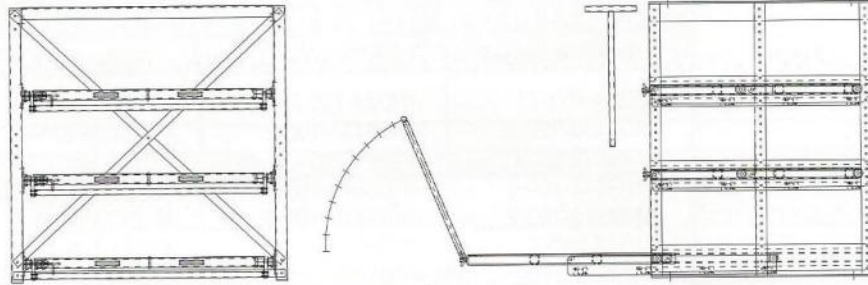


Utilizing an overhead crane or hoist capitalizes on the ergonomic benefits of a Glide-out 100

Adjustable height to accommodate a larger range of workers



PRODUCTION STORAGE SYSTEMS GLIDE-OUT 100



PRODUCTION STORAGE SOLUTIONS



Autolok feature available. Allows only one shelf to open at a time.

Shelves designed for uniform load

Cantilevered shelf/carriage system allows for a push/pull far less than ergonomic standard require

Ergonomically correct design for people at work

Ergonomically correct pull handles attached to the front of every shelf

PRODUCTION STORAGE SYSTEMS

GLIDE-OUT 100

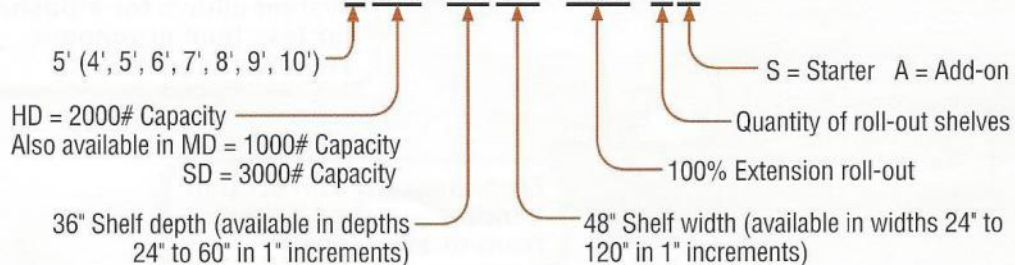
COMMON CONFIGURATIONS

*1000# CAPACITY	*2000# CAPACITY	*3000# CAPACITY
4MD24-100-2	4HD24-100-2	4SD24-100-2
4MD2436-100-2	4HD2436-100-2	4SD2436-100-2
4MD36-100-2	4HD36-100-2	4SD36-100-2
4MD3648-100-2	4HD3648-100-2	4SD3648-100-2
4MD4248-100-2	4HD4248-100-2	4S D4248-100-2
4MD48-100-2	4HD48-100-2	4SD48-100-2
4MD4860-100-2	4HD4860-100-2	4SD4860-100-2
4MD60-100-2	4HD60-100-2	4SD60-100-2
4MD6072-100-2	4HD6072-100-2	4SD6072-100-2
5MD24-100-3	5HD24-100-3	5SD24-100-3
5MD2436-100-3	5HD2436-100-3	5SD2436-100-3
5MD36-100-3	5HD36-100-3	5SD36-100-2
5MD3648-100-3	5HD3648-100-3	5SD3648-100-3
5MD4248-100-3	5HD4248-100-3	5SD4248-100-3
5MD48-100-3	5HD48-100-3	5SD48-100-3
5MD4860-100-3	5HD4860-100-3	5SD4860-100-3
5MD60-100-3	5HD60-100-3	5SD60-100-3
5MD6072-100-3	5HD6072-100-3	5SD6072-100-3
6MD24-100-3	6HD24-100-3	6SD24-100-3
6MD2436-100-3	6HD2436-100-3	6SD2436-100-3
6MD36-100-3	6HD36-100-3	6SD36-100-3
6MD3648-100-3	6HD3648-100-3	6SD3648-100-3
6MD4248-100-3	6HD4248-100-3	6SD4248-100-3
6MD48-100-3	6HD48-100-3	6SD48-100-3
6MD4860-100-3	6HD4860-100-3	6SD4860-100-3
6MD60-100-3	6HD60-100-3	6SD60-100-3
6MD6072-100-3	6HD6072-100-3	6SD6072-100-3
7MD24-100-4	7HD24-100-4	7SD24-100-4
7MD2436-100-4	7HD2436-100-4	7SD2436-100-4
7MD36-100-4	7HD36-100-4	7SD36-100-4
7MD3648-100-4	7HD3648-100-4	7SD3648-100-4
7MD4248-100-4	7HD4248-100-4	7SD4248-100-4
7MD48-100-4	7HD48-100-4	7SD48-100-4
7MD4860-100-4	7HD4860-100-4	7SD4860-100-4
7MD60-100-4	7HD60-100-4	7SD60-100-4
7MD6072-100-4	7HD6072-100-4	7SD6072-100-4

*add-on units available

GLIDE-OUT MODEL NUMBER EXAMPLE:

5 HD - 3648 - 100 - 3 S



PRODUCTION STORAGE SYSTEMS

CRANK-OUT GLIDE-OUT

Ideal for items that exceed Glide-Out 100 Storage System weight capacities.

Heavy Duty Shelves

Shelves are of all-welded construction with a standard 10 ga. steel deck. Shelves extend up to 75% with a large 5,000 lb. load capacity. Special surfaces are available.

POPULAR MODELS				
Model Number	Capacity per Shelf*	Upright Height	Shelf Size	Overall Dimensions**
8XDC36-75-2	5000 lb.	8 ft.	36"D x 36"W	38"D x 51"W
10XDC36-75-3	5000 lb.	10 ft.	36"D x 36"W	38"D x 51"W
8XDS3648-75-2	5000 lb.	8 ft.	36"D x 48"W	38"D x 63"W
10XDC3648-75-3	5000 lb.	10 ft.	36"D x 48"W	38"D x 63"W
8XDC48-75-2	5000 lb.	8 ft.	48"D x 48"W	50"D x 63"W
10XDC48-75-3	5000 lb.	10 ft.	48"D x 48"W	50"D x 63"W

* Lesser capacities available in Glide-Out 100 model. Shelf capacities based on uniformly distributed load.

** Add approximately 6" to OAW for crank handle.



Various Sizes Available

Standard shelf sizes are 36"D x 36"W, 36"D x 48"W, 48"D x 48"W and 48"D x 36"W with standard rack heights of 5 ft. through 10 ft. in 1 ft. increments. Shelves can be cranked from either the right or left side.

Custom Specifications

Many special units are available with different heights and shelf sizes. Sides, backs, lifting rings and forklift pick-up bases are also available.

1. Company Information

Date: 9/19/2014

Your Full Name:		Phone No.:	Fax No:
Company Name: (Distributor)		Email:	
Company Name: (End User)			
Address:	City:	State:	Zip Code:

2. Application Information

Application Type: (eg. Indoor, Outdoor, Freezer, etc.)		Application Spec.: (eg. Class 1 Div 2, etc.)			
Available Area:	Width:	Length:	Height:	Product Information: (What are you storing?)	
Product Size:	Width:	Depth:	Height:	Weight:	Quantity:

3. Pull-Out Shelf Information

Shelf Capacity:		Shelf Width:	Shelf Depth:	Clearance Between Shelves:
<input type="checkbox"/> 1,000 lbs <input type="checkbox"/> 2,000 lbs <input type="checkbox"/> 3,000 lbs				
Shelf Qty.:	Rack Height:	No. of Starter Units:	No. of Add-On Units:	

4. Available Options

<input type="checkbox"/> Enclosed Back	<input type="checkbox"/> Enclosed Sides	<input type="checkbox"/> Doors	<input type="checkbox"/> Shelf Lips
<input type="checkbox"/> UHMW on Shelves	<input type="checkbox"/> Custom Size	<input type="checkbox"/> Custom Color	<input type="checkbox"/> Auto-Lok Feature
<input type="checkbox"/> Bi-directional			

5. Additional Notes

Note: Rapistak reserves the right to change any and all selections made to accommodate the customers application.